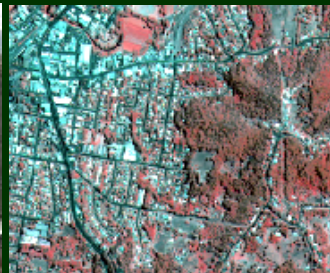


Company Profile

beyond landcover

GIS and Remote Sensing



www.beyondlandcover.com | info@beyondlandcover.com

Beyond Landcover Pty Ltd is a specialist spatial information consulting service established by Ross Jenkins in December 2009. Ross brings over 20 years experience in GIS, remote sensing and geosciences gained through employment in the public, resource industry and higher education sectors. Ross and his professional partners provide expertise in airborne laser scanning (ALS-LiDAR), current high-resolution satellite imagery, GPS and digital data capture, and spatial data systems development.

Beyond Landcover consults to:

- Local, State and Commonwealth government
- Exploration, Mining and Extractive Industries
- Forestry
- Planners and Developers
- Engineering and Utility Sectors

As professional consultants, we provide ethical, responsible and independent service and advice based on our qualifications and experience. We understand that clients need to maximise the value of their spatial data, and we provide quality advice on the right combination of GIS, remote sensing, field data and expert analysis to meet your needs.

Our aim is to provide timely and efficient spatial data analysis through the use of high-specification software, hardware and data capture systems, both directly and through integration with industry-standard suppliers.

Your needs: We strive to provide high-quality results to meet your needs. Our broad scientific experience, technical expertise, and attention to detail ensure you gain maximum value from your spatial information, throughout your project.

Your project strategy: We have the capability and flexibility to meet your project strategy. We can advise and assist you through all project stages:

- Scoping studies and needs analysis
- Assessment strategy and design
- Implementation and reporting
- Adaptive management and client services
- Data storage, metadata provision and knowledge management

Out best practise: We underpin your results with quality information maintenance, applying the principles of data custodianship, client consultation, and continuous research and development to ensure you always receive value for money service.

Satellite imagery

- Acquisition support
- Orthorectification
- Vegetation and other spectral indices
- Change detection
- Image classification
- Feature extraction

Topographic modelling

- Contours; hillshade; slope; insolation etc
- Catchments and drainage networks
- Cross-sections, 3D views, line-of-sight analysis

Airborne Laser Scanning (ALS - LiDAR)

- Topographic modelling
- Vegetation analysis
- Canopy height models
- Foliage cover
- Multi-temporal analysis
- Feature extraction

Geographic Information Systems (GIS)

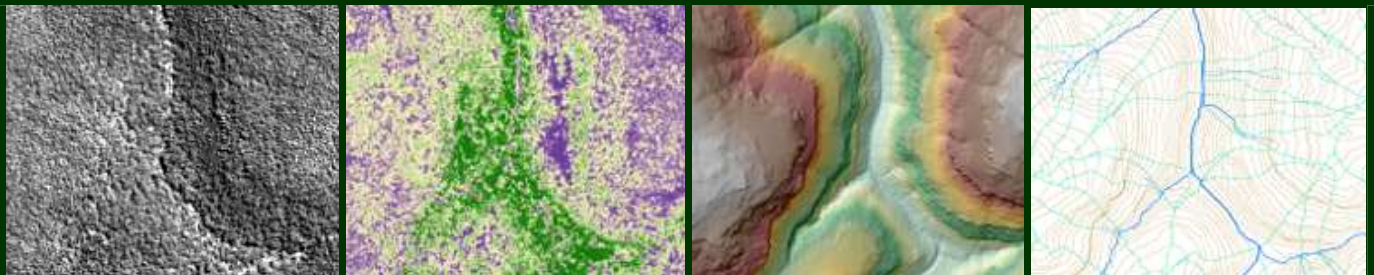
- Data development
- Map production
- Spatial analysis
- Data QA/QC and Metadata (ISO 19115; 19139)

www.beyondlandcover.com

ABN: 70 141 060 737
© Beyond Landcover 2010

beyond landcover

GIS and Remote Sensing



Ross Jenkins BSc(Hons), MSc, GradDipGIS, PhD

Professional memberships

- Geological Society of Australia
- American Society for Photogrammetry and Remote Sensing

Qualifications

- BSc (Geology) James Cook University and University of Newcastle (Hons)
- MSc (Geology) University of Newcastle
- Graduate Diploma (GIS) University of Queensland
- PhD (Geography) University of New England (submitted October 2009)



Career overview: Ross has over 20 years experience in GIS, remote sensing and geosciences. For the past 10 years, he has focussed on GIS and remote sensing through Local Government (GIS-Strategic Planning), Tertiary Education (GIS and Geography) and PhD Research (native vegetation remote sensing). Ross' background provides Beyond Landcover with the professional and technical foundation to support a diverse range of projects.

Ross began his professional career as an exploration geologist in Far North Queensland and elsewhere in eastern Australia, where he used remote sensing for backcountry navigation, geological mapping and anomaly detection. Ross' geological expertise includes epithermal and high-level porphyry systems, as well as crustal evolution of eastern Australia (geochemistry, volcanic and sedimentary facies analysis, structural geology, and Permian coal geology).

Ross expanded his skill base, studying GIS and remote sensing while working in local government in SE Queensland, before taking up the challenge of developing spatial science capacity, supervising graduate students and delivering undergraduate courses in geography, GIS, remote sensing and catchment analysis at the University of the Sunshine Coast.

Ross undertook Doctoral research using airborne laser scanning and high-resolution satellite imagery

at the University of New England, including a 6-month attachment to the Faculty of Forestry, University of British Columbia. His research focussed on developing baseline methods for native vegetation condition impact assessment. Following submission of his PhD, Ross established Beyond Landcover in order to make his expertise available on a commercial basis.

Skills:

- Advanced remote sensing, GIS and spatial analysis
- Vegetation structure and condition survey
- Geological mapping
- Data development
- Tertiary education and training

Professional statement: As a professional consultant, I follow the principle of Qualification Based Services, where it is my responsibility to ensure the client receives a complete and best-quality service, within the scope of the project. As company director, I am committed to maintaining a high level of technical and administrative expertise, thus ensuring accountability and value-for-money services. My involvement in your solution does not begin and end with contracts: Please feel free to contact me to discuss how I might assist your business.